

A Discussion of Sustainability at Different Scales

ASLA Sustainable Design & Development
Professional Practice Network



Saturday, October 20
12:45 pm – 1:45 pm
1.0 LA CES PDH

Sustainable Design & Development PPN
2018 ASLA Annual Meeting & EXPO

Learning Objectives

1. Summarize different sustainable design and development trends (policies, programs, guidelines, and standards) across the country through discussion with fellow attendees.
1. Identify some challenges associated with applying sustainability and SITES at different scales- from watershed to site design.
1. Discuss ways to apply SITES and LEED to material detailing and specifications.
1. Identify competing priorities that practitioners need to balance when planning for, and applying, sustainability at different scales.



Sustainability Across the Country

Shoemaker Green
Philadelphia, PA

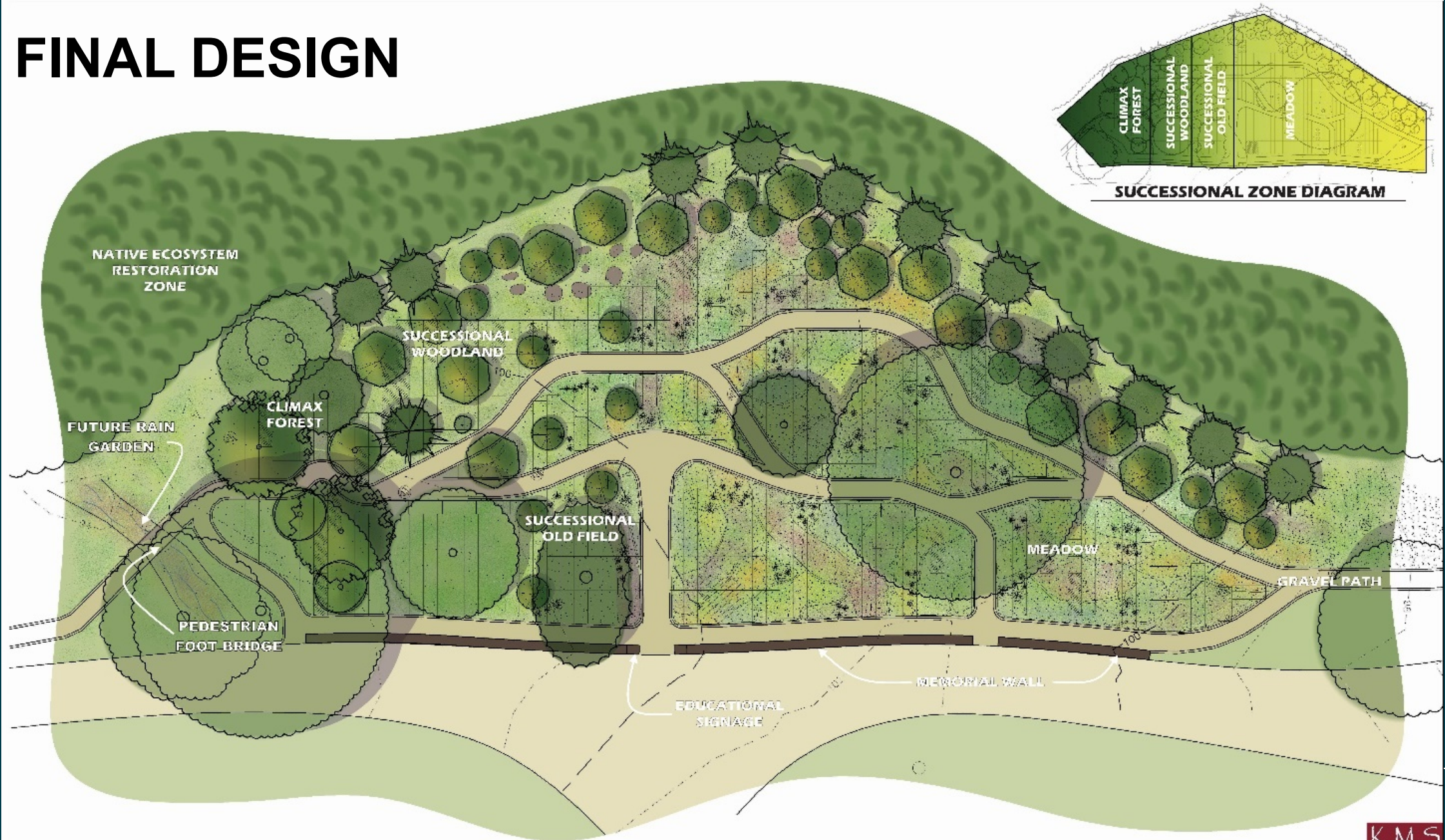


West Laurel Hill's Nature Sanctuary

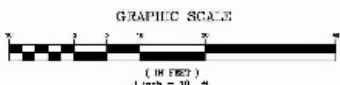
Bala Cynwyd, PA



FINAL DESIGN



West Laurel Hill Nature's Sanctuary





Sustainability at Different Scales

38 Dolores

San Francisco, CA



Chicago Navy Pier

Chicago, IL



Sustainability on the Ground

Blue Hole Regional Park
Wimberley, TX



Appendix 6

Atlanta BeltLine Master Plan

SUBAREA 1

ENOTA PARK MASTER PLAN

Prepared for
Atlanta BeltLine, Inc.
 by Tunnell-Spangler-Walsh & Associates
 with Grice & Associates, Inc.
 and Smith Dalia Architects

Adopted by the Atlanta City Council on December 6, 2010



- LEGEND**
- 1 EXISTING STREAM
 - 2 EXISTING CANOPY TREES
 - 3 "THE GREEN"
 - 4 WESTSIDE TRAIL
 - 5 PICNIC AREA
 - 6 ON-STREET PARKING
 - 7 ROOT BRIDGING
 - 8 BOARDWALK
 - 9 PARK ENTRY
 - 10 PAVILION
 - 11 MAINTENANCE ACCESS
 - 12 STAIRS
 - 13 TRAIL WITH OVERLOOK
 - 14 PASSIVE GARDEN
 - 15 PLAZA AT GREENWICH-ENOTA
 - 16 BIORETENTION
 - 17 BUFFER LANDSCAPING
 - 18 PLAY STRUCTURE/FOCAL POINT
 - 19 SPRAYGROUND PLAZA
 - 20 RESTROOM
 - 21 SCULPTURAL SEATING
 - 22 HALF-COURT BASKETBALL
 - 23 TERRACED SEATING
 - 24 ENTRY PLAZA- LUCILE AVE.
 - 25 SCULPTURE
 - 26 STREAM BANK RESTORATION
 - 27 HARD SURFACE TRAILS
 - 28 MULTIPURPOSE PLAY FIELD
 - 29 PARKS MAINTENANCE BUILDING
 - 30 PERVIOUS PAVING
 - 31 ACCESS RAMP
 - 32 SOLAR-POWER SHADE STRUCTURE
 - 33 WALL W/ SEATING AND OVERLOOKS



22. HALF-COURT BASKETBALL



19. SPRAYGROUND PLAZA



3. "THE GREEN"

ENOTA PARK EXPANSION

2016.09.13



Enota Park
Atlanta, GA

Breakout Questions

1. Are there barriers or challenges to SITES uptake? What solutions would you propose?
1. What sustainability policies and programs are available in your city? Are they voluntary or mandatory?
1. What do you see as the direction of sustainable design across the country? What trends are you noticing?



USGBC Happenings

THE Sustainable SITES Initiative®

Sustainable Design & Development PPN
2018 ASLA Annual Meeting & EXPO



Group Discussion

Q&A: what other questions do you have? What other topics would you like to cover?

What's happening with the SDD PPN over the next year?

- Planned initiatives
- What would you like to see the PPN tackle?
- Partnerships with other PPNs
- SITES
- ASLA – GBCI – USGBC partnership



Wrap up:

- Looking for more SITES education or SITES AP credits?

Monday, Oct 22
8:00 am

MON-A05 - Ecosystem Services and Green Infrastructure:
Understanding Valuation, Benefits, and SITES v2
Applications

Location: 108

Lisa Cowan, ASLA, SITES AP – Studioverde; Martha P. Sheils – New
England Environmental Finance Center; Rachel Bouvier – Rbouvier
consulting; Marla J. Stelk – Association of State Wetland Managers



Also consider authoring a blog post for the SDD Field or leading a webinar on sustainable design and development topics!



ASLA Sustainable Design & Development Professional Practice Network

www.asla.org/sustainable

Leadership: Kristen Reardon (Co-chair), Theresa Backhus (Co-chair), Hunter Beckham, Kevin Burke, Jodie Cook, John Courtney, Lisa Cowen, Kevin Graham, CeCe Haydock, Todd Hill, Lisa Kunst Vavro, April Phillips, Joshua Sloan

ASLA Staff Contact: Katie Riddle, kriddle@asla.org

